

# LGBT FOUNDATION

## OUR YEAR IN NUMBERS

At LGBT Foundation we believe in a fair and equal society where all lesbian, gay, bisexual and trans people can achieve their full potential.

Our work is as vital and urgent as ever. LGBT people still face persecution, discrimination and stark health inequalities. Through our services we reduce isolation amongst our communities, help people feel more confident and in control of their lives, and enable people to flourish.

Every year we give a voice, provide help and offer hope to 40,000 people.

We work in partnership with others to build strong, cohesive and influential LGBT communities and promote attitude change in society, reaching 365,000 people online each year.

Together, we can secure a safe, healthy and equal future for all LGBT people.

**Until then, we're here if you need us.**

Here's just a flavour of the difference we've made in the last year.



1,500,000 patients are now registered at Pride in Practice registered GP practices- that's over 50% of all surgeries in Greater Manchester



We distributed over quarter of a million loose condoms and sachets of lube across Greater Manchester

We reached over 3 million people with a documentary about our pioneering Village Angels programme through our work with Smirnoff and LADbible- that's 5% of the UK population



We ensured

# 2634

people with nowhere else to turn had access to immediate advice and support through our helpline, email, and pop-in service



We provided 260 full sexual health screenings and 498 HIV tests, helping more people to have happy, healthy sex

We delivered

# 1035

LGBT affirmative and inclusive talking therapy sessions to 276 people, supporting LGBT people with a range of issues including coming out, anxiety and depression

“

It's been another record-breaking year for LGBT Foundation. We've provided more services to people in need than ever before, and made a real impact as we campaign for a fair and equal society where all lesbian, gay, bi and trans people can reach their full potential. The numbers of people we've helped are impressive, and growing- but each statistic you read also represents a real person whose life has been touched by LGBT Foundation who found we were there for them when they needed us. Thank you for your continued support. ”

Want to be a part of our story? Visit [lgbt.foundation/takepart](http://lgbt.foundation/takepart)

**Smyth Harper, Chair and Paul Martin OBE, Chief Executive**



**WE'RE HERE IF YOU NEED US**

[lgbt.foundation](http://lgbt.foundation) 0345 3 30 30 30

**LGBT**  
foundation

# ACHIEVING EQUALITY

We ensure LGBT people's voice are heard and help make the world a more equal place for LGBT people.

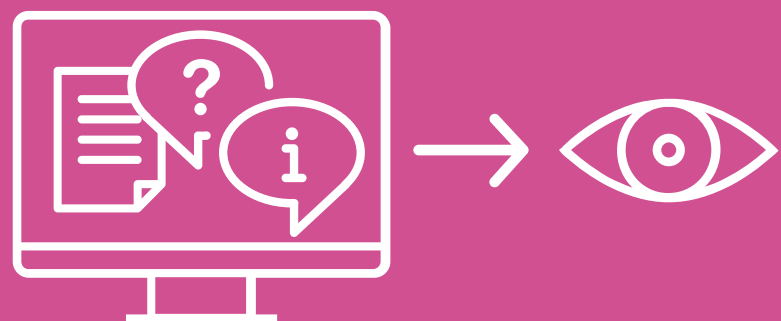


Secured the game-changing **NHS England Sexual Orientation Monitoring Information Standard** after 7 years of work, because if we're not counted, we don't count



Pride in Practice trained

# 1680



healthcare professionals on LGBT issues and healthcare needs. Over 99% of them would recommend our training

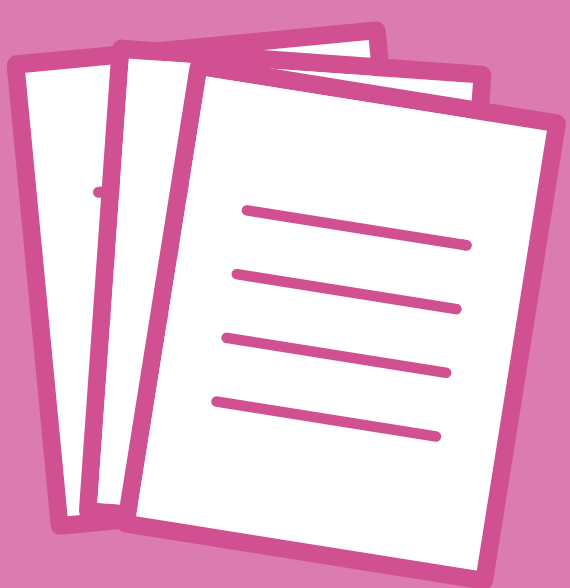
#TransMCR



Ran

# 12

community led Trans MCR events attended by 327 people. 99% of them would recommend it

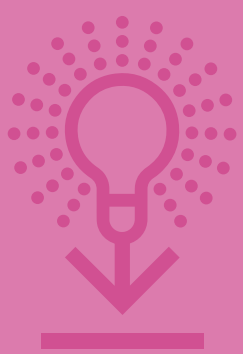


Published and distributed over

# 1000

copies of our Trans Guides to GPs and trans communities

Our lesbian and bi women's community events & skills workshops were attended 446 times over the course of the year



Produced brand new research on trans communities needs and assets, which has been downloaded 500 times

“ I felt really lost and unsure of what to do with myself after having cancer and I didn't think there was much out there for me as an LGBT person with the condition, however this programme has allowed me to reconnect with myself and coming together with others who are similar to me to discuss the issues that have affected us has given me a fresh purpose

LGBT Cancer Programme service user



**WE'RE HERE IF YOU NEED US**

lgbt.foundation 0345 3 30 30 30

**LGBT**  
foundation

# ENCOURAGING WELLBEING

We work to increase confidence and reduce isolation amongst our communities

Supported

# 46

new people to build their support networks, make friends and reduce loneliness through our Befriending programme, supported by 10 incredible volunteers



Our support and social groups provided safe and accessible spaces for

# 561 LGBT people

to meet likeminded others, reduce their feelings of isolation and build confidence

Delivered a series of innovative and award winning voice and communication workshops in partnership with the University of Manchester.

# 35

All 35 attendees were satisfied with our service



Provided immediate support for

# 2634

people with nowhere else to turn, through our 'Foundation Direct' service

an increase of

# 8.4% ↑

on last year

Our team delivered

# 1035

talking therapies sessions to

# 276

people in need of LGBT affirmative counselling

“ I wanted to thank you again for all the help you've given me over the last few months. I don't think I would have been in a good place to have surgery if I hadn't been able to work through all the things that have been building up. So thank you for all your help. ”

Talking Therapies service user

**WE'RE HERE IF YOU NEED US**

lgbt.foundation 0345 3 30 30 30

**LGBT**  
foundation

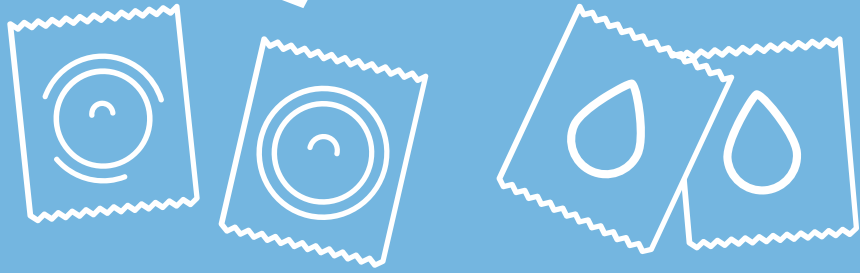
# PROMOTING SAFETY

We want LGBT people to feel safe and be secure, wherever they are

Distributed

# 94,600

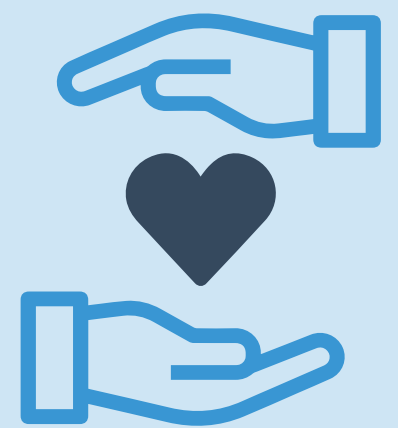
Safer Sex packs to 65 LGBT community venues including bars, clubs, saunas, community centres and more



Posted

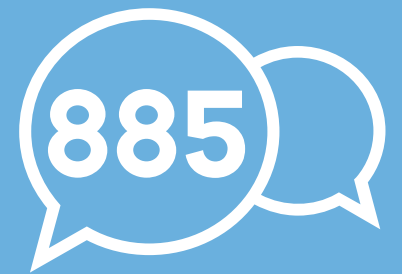
# 282 Play Packs

designed for gay, bi and other men who have sex with men, specifically for people taking part in group sex, and for people engaging in chemsex



Delivered 498 HIV tests and 260 full sexual health screenings, alongside access to sexual wellbeing advice and support

Our LGBT substance misuse programme supported 128 people across 885 interactions, including 1-2-1 and group support



Our Village Angels helped

# 4605

people in the Gay Village



over 114 Friday and Saturday night shifts, including 841 highly vulnerable people

Launched the Village Haven and since then have helped 253 vulnerable people including 70 people with alcohol related issues and 28 people with medical issues



Our brand new domestic abuse programme helped 29 people with practical housing advice, 1:1 casework support, and advice sessions

“It's thanks to you that I didn't die that night. You really are an angel – thank you for keeping me alive.”

Village Angels service user

**WE'RE HERE IF YOU NEED US**

lgbt.foundation 0345 3 30 30 30

**LGBT**  
foundation

# OUR PEOPLE

We're people powered- our staff, volunteers and trustees make our work possible

 **140**

brilliant volunteers dedicated their time to us this year across a range of programmes, from befriending to office support



On Manchester Pride Weekend itself, 107 volunteers gave an amazing

**727 hours**

of their time over just 4 days



**90%**

of our volunteers said they'd recommend us as an organisation to volunteer with



Our Village Angels and Village Haven programmes were powered by 46 volunteers, keeping people safer in the Village every Friday and Saturday night until 5am

**46**

volunteers



Our

**organisation's values**

of

**passion, empowerment, integrity and respect**

informed

**everything we've achieved**

“Volunteering gives me a fixed point in the week. It also gives me useful insight into LGBT material and issues. On occasion I have been able to use it in connection with my Open University studies. If you're thinking of volunteering at LGBT Foundation, first of all I would say make the step. Remember that there's support there, team leaders, staff members, supervisors, you name it. There's a good atmosphere and social aspects too. If you are feeling a bit isolated, volunteering can be a great way to relieve that.”

LGBT Foundation Volunteer

**WE'RE HERE IF YOU NEED US**

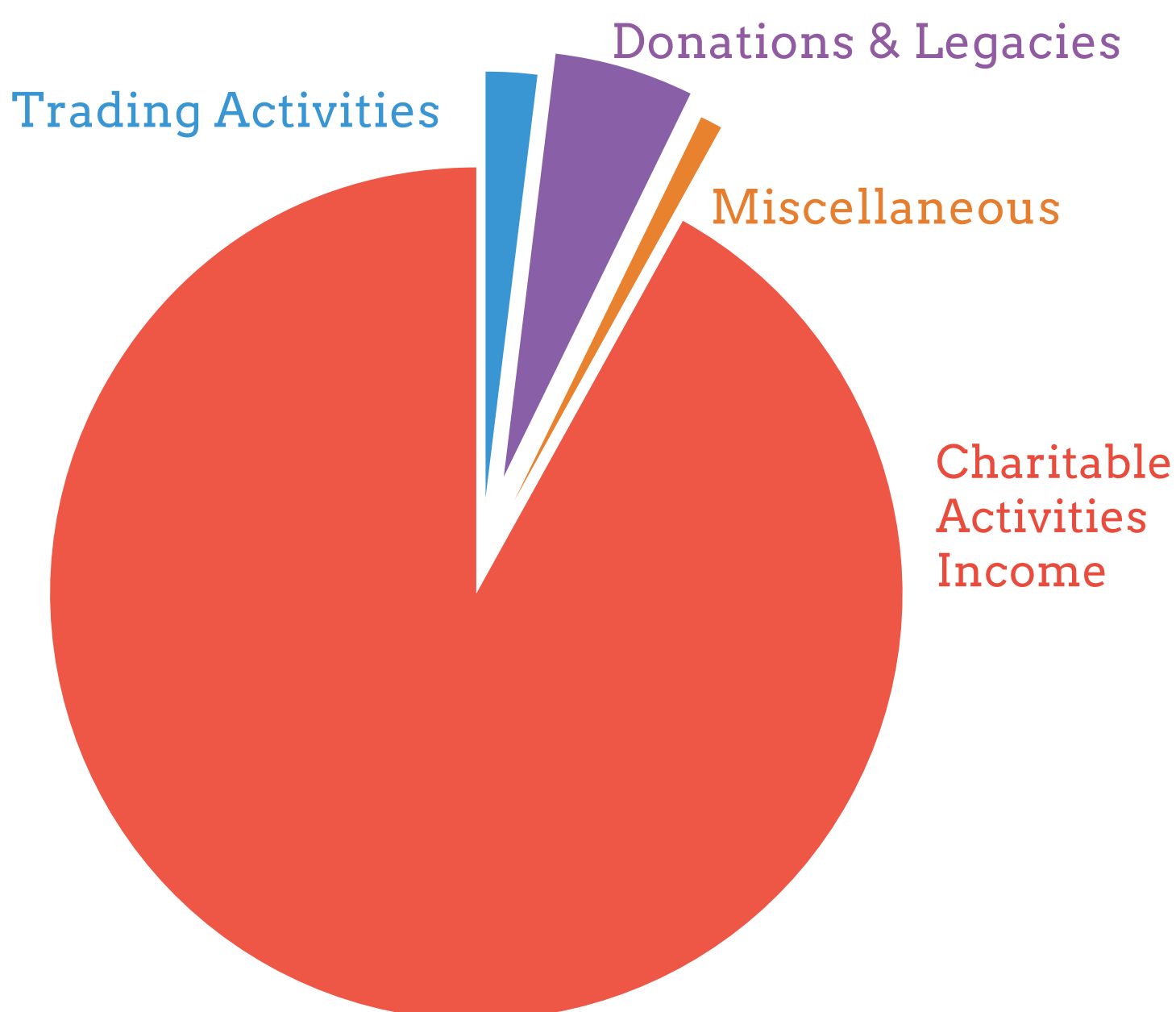
lgbt.foundation 0345 3 30 30 30

**LGBT**  
foundation

# OUR FINANCES

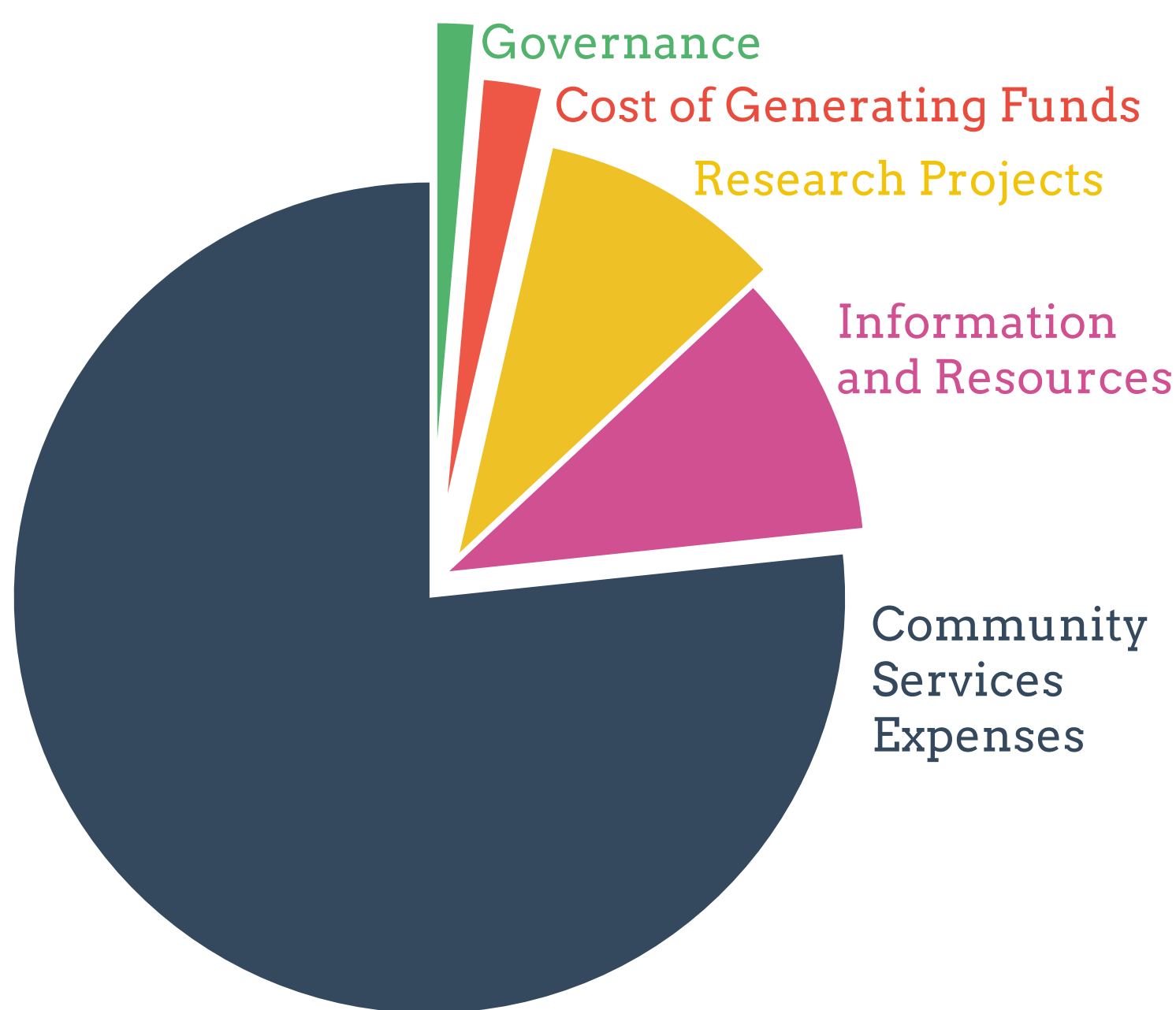
Your incredible support makes our work possible. Thanks to the generous support of our funders and donors, we're able to help more LGBT people than ever before.

## Income



Charitable Activities Income:	£2,006,370
Trading Activities:	£44,088
Donations & Legacies:	£114,907
Other Miscellaneous:	£17,252

## Expenditure



Our Range of Community Services:	£1,664,697
Information & Resources:	£220,806
Research Projects:	£206,501
Cost of Generating Funds:	£47,384
Governance Costs:	£32,020

We'd like to give our heartfelt thanks to everyone who supported us during 2017/18, including our funders, donors, trustees, staff, volunteers, service-users, partners and community members.

**WE'RE HERE IF YOU NEED US**

lgbt.foundation 0345 3 30 30 30

**LGBT**  
foundation

# FEELING INSPIRED?

Feeling inspired? Keep in touch, and be a part of our story next year:

- Register for our free, weekly e-Bulletin OUTspoken, providing you with up to date information and stories (at [www.lgbt.foundation](http://www.lgbt.foundation))



- For the very latest news, events, photos, reactions and comments, follow us on Twitter (@LGBTfdn); on Instagram (lgbtfdn) and on Facebook ('LGBT Foundation')
- Become a volunteer, helping to support our events, services and office functions ([www.lgbt.foundation/volunteering](http://www.lgbt.foundation/volunteering))
- Join our monthly donor scheme, helping to make sure we can finance our work and continue to support LGBT people who need us ([www.lgbt.foundation/donate](http://www.lgbt.foundation/donate))



## Thank you

**WE'RE HERE IF YOU NEED US**  
lgbt.foundation 0345 3 30 30 30

**LGBT**  
foundation